



Cabinet Only



UV WHITE

TRADITIONAL



PU SATIN



PU SHAKER



PU GLOSS

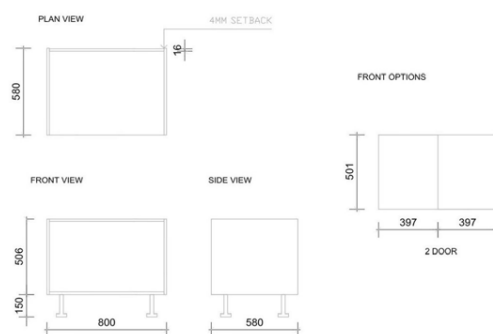
FKC800BF : 800mm x 580mm x 528mm

DIMENSIONS

Length: 800mm | Depth: 580mm | Height: 506mm

DESCRIPTION

- Pre drilled, dowel and screw assembly
- Solid 16mm construction
- AUS STD E1 HMR (high moisture resistance) Particle Board
- Incl's adjustable legs and shelf (included in the price)
- 10 year structural warranty
- Flatpack Includes ; 4 Plastic Adj. Legs + Cabinet Dowels and Screws



The Sink Warehouse flat pack cabinet are simply the best value flat pack cabinet available. The solid 16mm cabinet construction includes a solid back, front and back top rails and is very easy to assemble. Included in the flat pack are the assembly dowels and screws as well as caps, heavy duty adjustable legs and adjustable shelf. The cabinets parts are also abs edged on all exposed sides for extra protection against moisture

WARRANTY

10 Year Structural Warranty / 10 Year Warranty for Cabinetry & Doors / Lifetime Hardware Warranty (Hinges & Runners)

- Product replacement does not include installation or removal of the original product
- Check product for damage before installation - installing a damaged product voids warranty
- You will need to purchase the correct amount of kick board for the length of your kitchen or laundry.

IMPORTANT NOTICE

- All pictures and drawings on this brochure are representational only, changes in the product may have occurred since time of print.
- All prices on this brochure and The Sink Warehouse website are subject to change without notice.

To contact The Sink Warehouse email us at info@sinkwarehouse.com.au