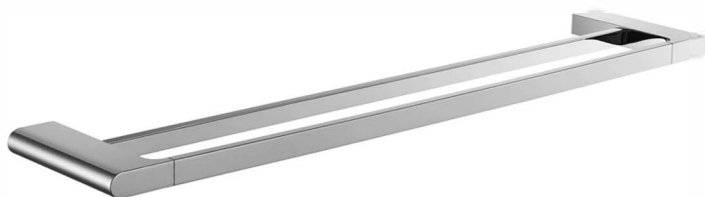


# BASTTRD6 : STYLE - DOUBLE TOWEL RAIL 600MM



## DIMENSION

Length: 600mm | Depth: 120mm

## DESCRIPTION

- Contemporary double towel rail
- Includes fixing kit
- Chrome on brass construction

## WARRANTY

1 Year Replacement Warranty

- Product replacement does not include installation or removal of the original product
- Check product for damage before installation - installing a damaged product voids warranty

## IMPORTANT NOTICE

- It is strongly recommended that any cut-outs made to your bench top is made based on the individual product dimensions.
- All pictures and drawings on this brochure are representational only, changes in the product may have occurred since time of print.
- All prices on this brochure and The Sink Warehouse website are subject to change without notice.